



Ground Floor 63 St Thomas's Road, Finsbury Park, London, N4 2QH

£2,500 Per Month

- Finsbury Park Tube
- Private Garden

Ground Floor 63 St Thomas's Road, Finsbury Park N4 2QH

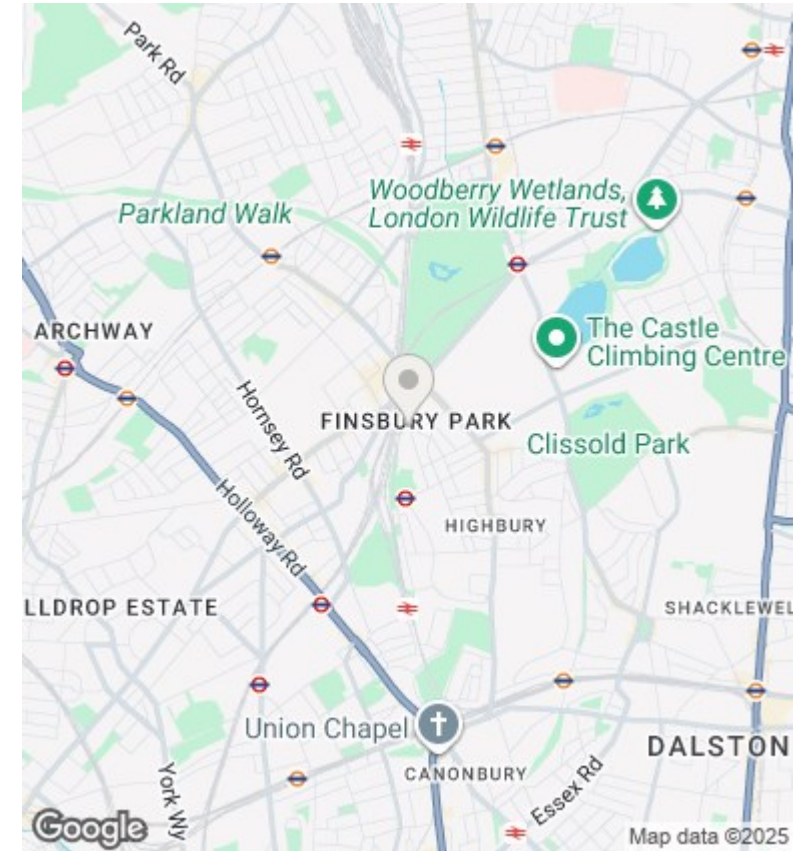
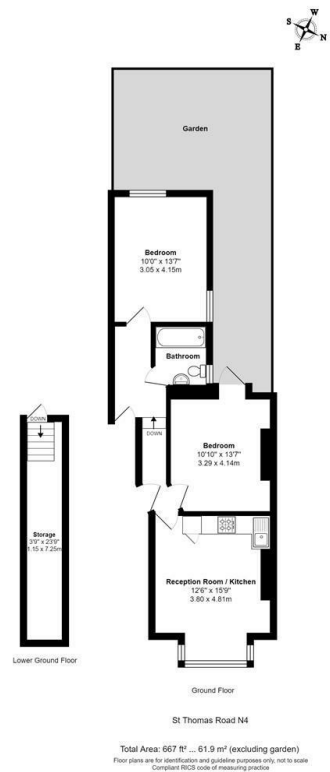
An amazing two bedroom garden flat situated on the ground floor of a beautiful period conversion. The property comprises an open plan living and kitchen area with fitted storage, two spacious double bedrooms, modern fully tiled bathroom and a private rear garden. The ideal layout is seamless and The fully tiled bathroom comes equipped with a lush bathtub, and the rear garden has plenty of space to enjoy in private.

Excellent located just a 5 minute walk from Finsbury Park Underground and Mainline Stations (Piccadilly Line, Victoria Line and National Rail) the flat is ideal for anyone with a commute (or working from home). Just moments away are local amenities that offer an abundance of activities and entertainment.



Council Tax Band: C





Directions

Viewings

Viewings by arrangement only. Call 02073593191 to make an appointment.

Council Tax Band

C

Energy Efficiency Rating		
	Current	Potential
Very energy efficient - lower running costs		
(92 plus) A		
(81-91) B		
(69-80) C	69	75
(55-68) D		
(39-54) E		
(21-38) F		
(1-20) G		
Not energy efficient - higher running costs		
England & Wales	EU Directive 2002/91/EC	





Score	Energy rating	Current	Potential
92+	A		
81-91	B		
69-80	C	69 C	75
55-68	D		
49-54	E		
35-48	F		
20	G		

